

KEY TO MATERIALS :-

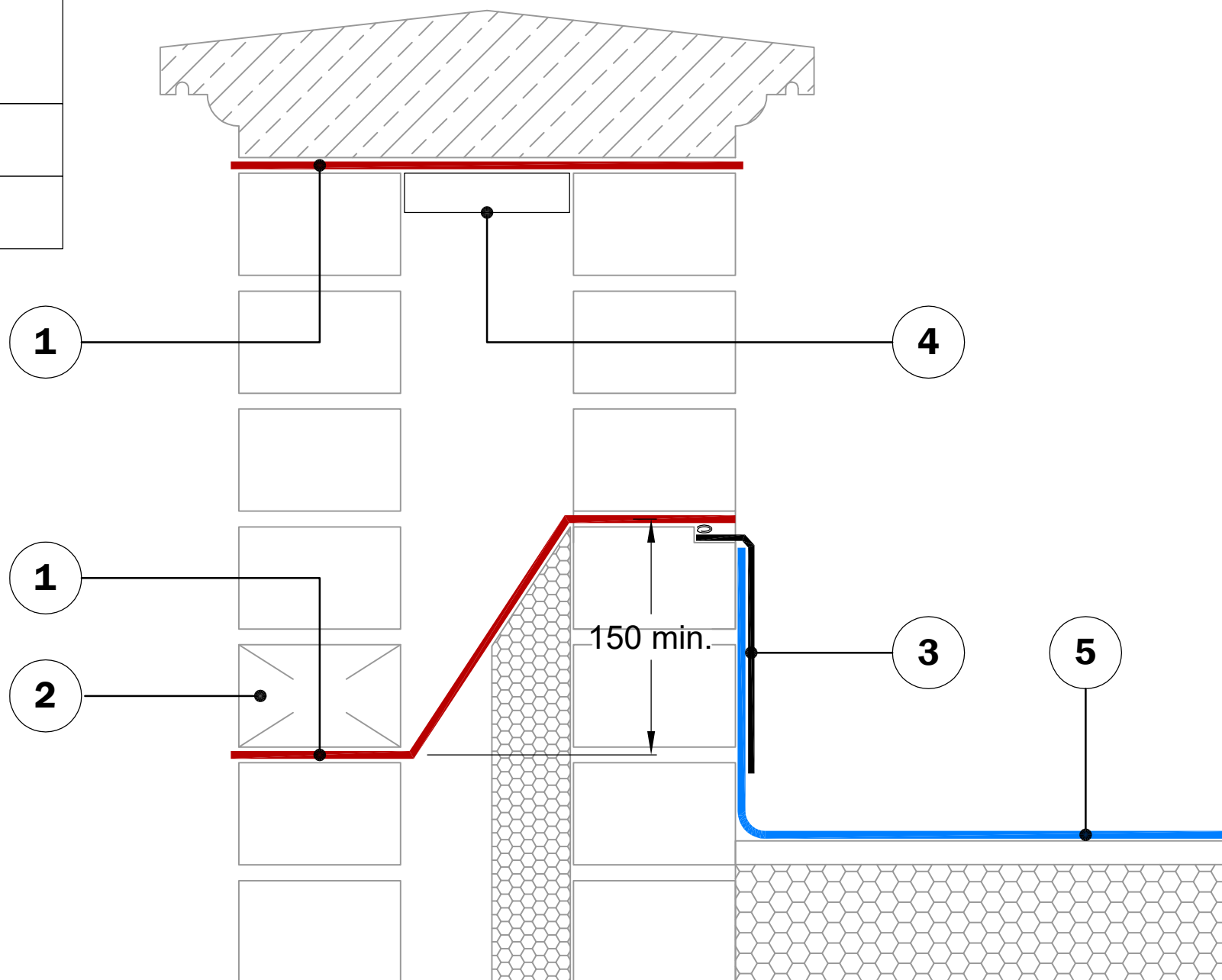
1 Visqueen Zedex High Bond DPC / cavity tray sandwiched between even beds of fresh mortar. All laps to be 100mm minimum & torch bonded.

2 Weep holes should be provided at a maximum of 450mm intervals.

3 Wedged & pointed cover flashing to Architect's detail.

4 Cavity closer / DPC support to Architect's detail.

5 Roof membrane system by others.



© Copyright reserved. This drawing may not be reproduced or amended without prior written permission.

Detail issued for guidance only. Designer's approval required.

Site construction sequencing should be assessed before the appropriate Visqueen Standard Detail is selected & approved by the Designer.

All Visqueen materials must be installed in strict accordance with the manufacturer's instructions. Refer to the current Visqueen datasheets.

DPCs and DPC cavity trays to be installed in accordance with BS8215:1991 and PD6697:2019.

Do not scale, use figured dimensions only. All figured dimensions are in mm.

Standard Detail



www.visqueen.com

Scale : NTS

Date : Oct.2020

Drawing No : DPC-20



Typical Parapet Detail.

VISQUEEN
0333 202 6800
www.visqueen.com
enquiries@visqueen.com